

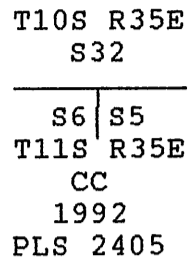
CERTIFIED RECORD OF LAND CORNER MONUMENTATION

INDEX No. A-5

History of original corner establishment:

None. This corner established at the point of intersection on the Second Standard Parallel South, this survey.

DIAGRAM



Description of Corner Evidence Found:

See the "Certified Record of Land Corner Monumentation" labeled A-5 Original, which documents the evidence found and remonumented.

The original evidence which I remonumented and stamped AM on my monument bears S00°14'35"E, 3.20 ft from this point of intersection on the Second Standard Parallel South.

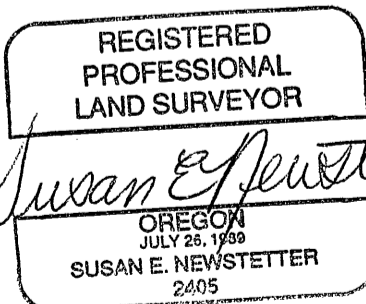
Description of monument and accessories I established to perpetuate the original location of this corner:

Set 2-1/2"x30" aluminum pipe with 3-1/4" aluminum cap, stamped as shown on the DIAGRAM, 20" in the ground and raised a mound of stone and earth around the monument.

From Which:

- Douglas Fir, 14" dia., bears S80°15'E, 30.3 ft., scribed: T11S R35E S5 CC BT
- Ponderosa Pine, 20" dia., bears S65°30'E, 95.9 ft., scribed: T11S R35E S5 CC BT
- Ponderosa Pine, 12" dia., bears S26°45'W, 20.5 ft., scribed: T11S R35E S6 CC BT
- Ponderosa Pine, 12" dia., bears S56°30'W, 25.0 ft., scribed: T11S R35E S6 CC BT

Measurements to BT's taken with a magnetic compass, declination 20° East, and a nylon clad steel tape. Set steel fence post with Land Survey Monument (54-9) sign 5' north of the monument. Nailed a brass washer stamped PLS 2405 on blaze above BT scribe as taken this survey. Nailed Bearing Tree (54-3) signs above blaze and Land Survey Monument (54-9) signs on back of each tree as required. Painted a 6" red band above Bearing Trees signs and painted blaze red.



Exp: 12/31/94

This work was performed by:
Susan E. Newstetter PLS 2405
Witnessed by: D. Mitchell Ferguson
and Rick Saul
November 2, 1992
Refer to Grant Co. Survey No.: 1239

Office of Surveyor County of Grant
State of OR I hereby certify that the within instrument was
filed in this office for record on the 20 day of Jan., 1993
Robert D. Dwyer by _____
(COUNTY OFFICIAL) (DEPUTY)